



International Journal of Innovative Research in Science Engineering and Technology (IJIRSET)

(A Monthly, Peer Reviewed, Refereed, Scholarly Indexed, Open Access Journal)



Impact Factor: 8.699

Volume 15, Issue 3, March 2026

AI-Based Audio to Sign Language Conversion System

D Manasa¹, Akhila Deegoju², B. Anil Kumar³, Aditya Mahankali⁴

Assistant Professor, Department of Information Technology, ACE Engineering College, Hyderabad, India¹

IV B. Tech Students, Department of Information Technology, ACE Engineering College, Hyderabad, India^{2,3,4}

ABSTRACT: This project proposes an AI-based system that converts spoken audio into sign language, enabling effective communication between hearing individuals and the deaf community. The system captures speech input through a microphone and processes it using speech recognition techniques to convert audio into text. The extracted text is then analyzed using natural language processing to identify meaningful words and sentence structure. These words are mapped to corresponding sign language gestures using a predefined dataset. The output is displayed in the form of images or animated gestures, enabling better understanding for hearing-impaired users. The system aims to provide real-time translation with improved accuracy and efficiency, thereby reducing communication barriers and promoting inclusivity.

I. INTRODUCTION

Communication between hearing and those with speech or hearing impairments is often difficult due to the lack of the absence of a shared communication method. Sign language is widely used by hearing-impaired individuals, but it is not commonly understood by the general public. This creates challenges in everyday interactions. With advancements in artificial intelligence, especially in speech recognition and natural language processing, it is possible to develop systems that translate speech into sign language. This project focuses on designing an AI-based system that converts audio input into sign language gestures in real time. The goal is to enhance accessibility, improve communication, and support inclusive environments.

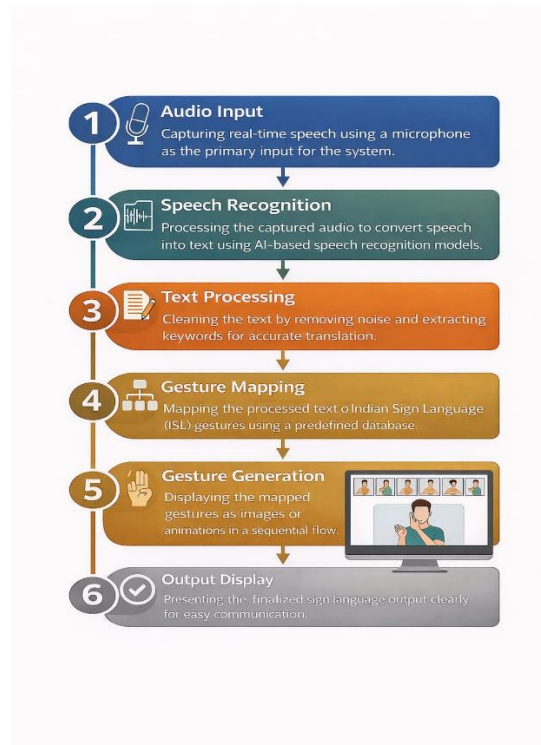
II. EXISTING SYSTEM

Existing systems primarily depend on speech-to-text or text-based approaches and lack direct conversion into Indian Sign Language (ISL). Some existing solutions use pre-recorded gesture images or videos, but they lack real-time processing and flexibility. Many systems depend on the single input type, such as voice or text, without proper contextual understanding, which leads to inaccurate or incomplete communication. Additionally, these systems do not support continuous interaction and often have static interfaces that fail to display dynamic sign gestures effectively, making them less practical for real-world usage.

III. PROPOSED SYSTEM

The proposed AI-based Audio to Sign Language Conversion System provides a real-time solution by converting spoken language into ISL gestures. The system captures audio input through a microphone and converts it into text using speech recognition techniques, after which natural language processing is applied to extract meaningful words. These words are mapped to corresponding ISL gestures using a predefined dataset, and the output is displayed as images or animations in sequence. The system ensures faster processing, better accuracy, and improved usability compared to existing methods, making it more effective for real-time communication between hearing and speech-impaired individuals.

IV. METHODOLOGY



i. Data Collection

The system collects audio input from the user through a microphone in real time. The captured speech signals are used as the primary input for further processing and translation.

ii. Data Processing

The input audio is processed to remove noise and improve clarity. Speech recognition techniques are applied to convert the audio into text, and basic preprocessing such as tokenization is performed to extract meaningful words.

iii. Text Analysis and Mapping

The processed text is analyzed using natural language processing to identify important words. These words are then mapped to corresponding Indian Sign Language (ISL) gestures using a predefined dataset.

iv. Gesture Generation

The mapped gestures are displayed in the form of images or animations, arranged sequentially to represent the spoken sentence clearly for the user.

v. System Evaluation

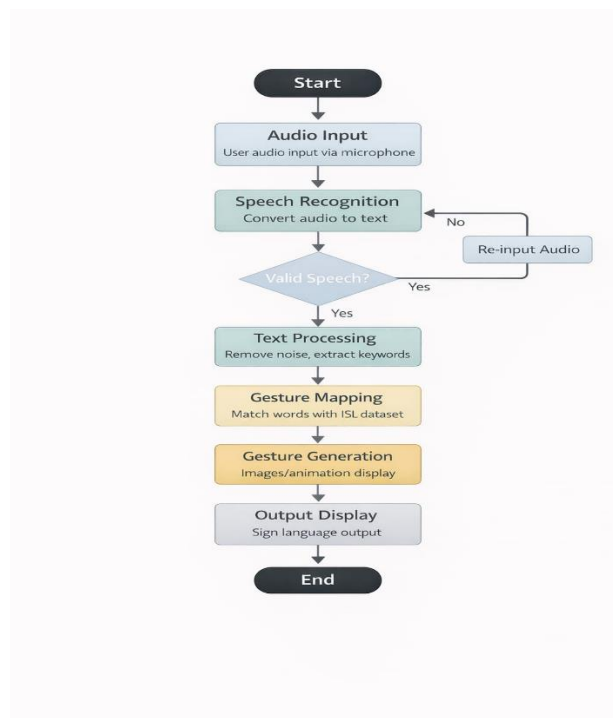
The system is evaluated based on performance metrics such as accuracy, response time, and clarity of gesture output to ensure effective communication.

V. SYSTEM ARCHITECTURE

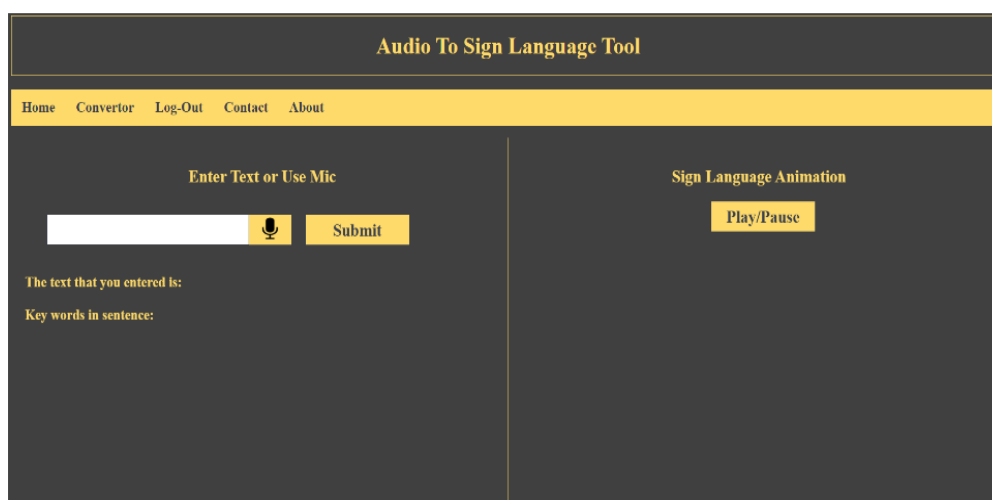
The system architecture defines how different components of the AI-based Audio to Sign Language Conversion System interact to perform speech processing and gesture generation in an efficient manner. It provides a clear representation of how data flows through the system and how each module contributes to converting audio into meaningful Indian Sign Language (ISL) output.

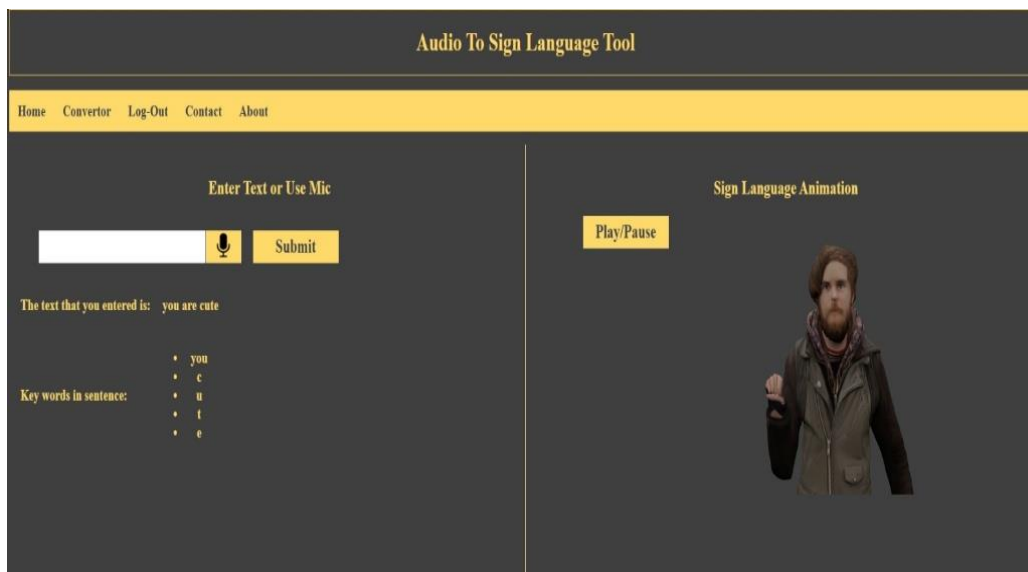
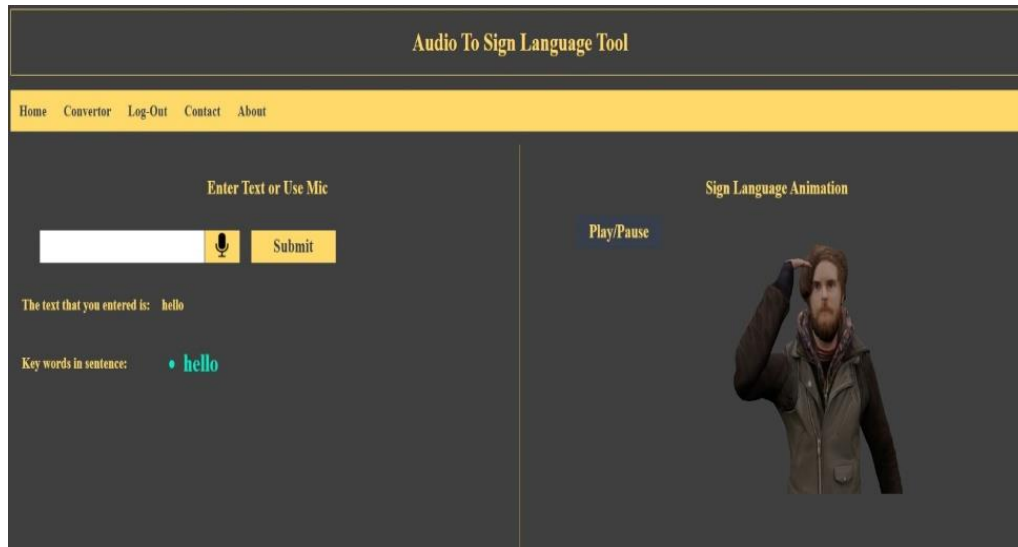
The architecture consists of multiple layers, including the Input Layer, Processing Layer, Translation Layer, and Output Layer. The Input Layer captures real-time audio through a microphone. This audio is passed to the Processing Layer, where speech recognition techniques are applied to convert the speech into text, along with basic preprocessing such as noise removal and text cleaning.

The processed text is then forwarded to the Translation Layer, where natural language processing is used to extract important words and map them to corresponding ISL gestures using a predefined dataset. Finally, the Output Layer displays the gestures in the form of images or animations in sequence, allowing users to understand the translated content clearly. This layered architecture ensures smooth operation, better accuracy, and efficient real-time communication.



VI. RESULTS AND OUTPUT





VII. CONCLUSION

The rapid advancement of Artificial Intelligence has significantly improved the capabilities of modern digital systems, but communication between hearing individuals and the deaf community still remains a challenge. This project, AI-Based Audio to Sign Language Conversion System, demonstrates how integrating speech recognition and natural language processing can effectively bridge this communication gap by converting spoken language into Indian Sign Language (ISL) in real time.

The main contribution of this work lies in developing a system that processes audio input, converts it into meaningful text, and maps it to corresponding ISL gestures using a structured dataset. This approach overcomes the limitations of traditional communication methods and enables more accurate and efficient interaction. By generating gesture-based outputs in the form of images or animations, the system ensures better understanding for hearing-impaired users.

Furthermore, the system provides a user-friendly and scalable solution that can be extended with larger datasets and improved models for higher accuracy. It highlights the importance of AI in assistive technologies and its role

in promoting inclusive communication. Overall, this project demonstrates that real-time audio-to-sign language conversion can significantly enhance accessibility and create a more inclusive environment for individuals with hearing and speech impairments.

VIII. FUTURE SCOPE

The proposed system provides a strong foundation for real-time audio-to-sign language conversion; however, there are several opportunities for enhancement and expansion to improve its performance and real-world applicability. One of the key future improvements is the implementation of advanced speech recognition models that can handle different accents, noisy environments, and continuous speech more effectively. This will improve the accuracy and reliability of the system in real-time scenarios.

Another important enhancement is the expansion of the Indian Sign Language (ISL) dataset to support a larger vocabulary and more complex sentence structures. This will enable the system to provide more meaningful and context-aware translations instead of word-by-word conversion. The integration of deep learning models such as CNN and transformer-based architectures can further improve gesture mapping and output quality.

Additionally, the system can be extended by incorporating 3D animated avatars to represent sign language more naturally and clearly. This will enhance user understanding and make the interaction more realistic. The system can also be developed as a mobile application and integrated with smart devices to allow easy access and usage in everyday situations.

Furthermore, improvements in system performance, scalability, and cloud-based deployment can make the solution suitable for large-scale applications. Continuous learning mechanisms can also be introduced to allow the system to improve over time based on user interactions. Overall, these enhancements will make the system more efficient, accurate, and practical, contributing to better communication and inclusivity for individuals with hearing and speech impairments.

REFERENCES

1. Nair, A. V., & Bindu, V. (2013). A review on Indian sign language recognition. *International Journal of Computer Applications*, 73(22). Available: <https://www.ijcaonline.org/archives/volume73/number22/12774-9727>
2. Camgoz, N. C., Koller, O., Hadfield, S., & Bowden, R. (2018). Neural sign language translation. *Proceedings of the IEEE Conference on Computer Vision and Pattern Recognition (CVPR)*. Available: <https://arxiv.org/abs/1805.02405>
3. Rabiner, L., & Juang, B. (1993). *Fundamentals of speech recognition*. Prentice Hall. Available: <https://ieeexplore.ieee.org/document/18626>
4. Indian Sign Language Research and Training Centre (ISLRTC). Department of Empowerment of Persons with Disabilities, Government of India. Available: <https://islrtc.nic.in>
5. [5] Brahme, S. (2017). Reading the signs: Sign language. Available: <http://forreadingaddicts.co.uk/culture/reading-signs-sign-language/18395>



INTERNATIONAL
STANDARD
SERIAL
NUMBER
INDIA



INTERNATIONAL JOURNAL OF INNOVATIVE RESEARCH

IN SCIENCE | ENGINEERING | TECHNOLOGY

 9940 572 462  6381 907 438  ijirset@gmail.com



www.ijirset.com

Scan to save the contact details